

*A World Market Leader  
in Automated Waste Handling*



**B Balemaster®**





# Balemaster®

*an industry leader in waste handling automation*

## In 1946...

*Balemaster began as part of the East Chicago Machine Tool Corporation with the introduction of automatic horizontal balers and shredders built for specialized industrial applications. From the beginning, Balemaster engineered these balers and shredders to meet the production requirements of a wide range of customers needing automation in their waste handling operations.*

## Today...

*We are recognized as a world leader in baling technology. We continue in the tradition of providing innovative solutions built around our solid engineering expertise. We have commissioned thousands of balers and shredders worldwide. As customer requirements have changed over the years, we have responded by offering the industry's deepest product line, capable of cost effectively meeting any automatic waste handling challenge.*



## Engineering Excellence

Expert engineering goes into every piece of equipment that we build. We have earned a reputation in developing innovative technologies such as positive dust control, operator friendly Touch Screen controllers, our highly productive "Auto-Ty" baler line and our low RPM "Quiet" Shredder line. Our engineers continue to respond to the real world needs of our customers.



## Manufacturing Expertise

Craftsmanship and expert CNC precision machining go into every piece of equipment that comes off our floor. Our mechanical, electrical and structural engineers oversee meeting the strictest quality control standards. This contributes to our equipment's reputation as being the most reliable and dependable in the industry....offering longer service life and a superior return on your investment.



## Service Commitment

Balemaster's commitment to its customers extends long after the sale. We are 'always there' to offer you any general and/or technical assistance that you might need. We place an emphasis on "rapid response"...maintaining an active inventory of all major parts in our 10,000 sq.ft. Parts Department. Most replacement parts are available for immediate shipment.



## Comprehensive Training

Balemaster's commitment to training is unique in the industry. Our 3 day intensive training sessions teach your operators everything they need to know about your equipment. Our classes comprehensively cover preventative maintenance issues and electrical, hydraulic, and mechanical troubleshooting techniques....all aimed at making your personnel truly effective in daily equipment operations.

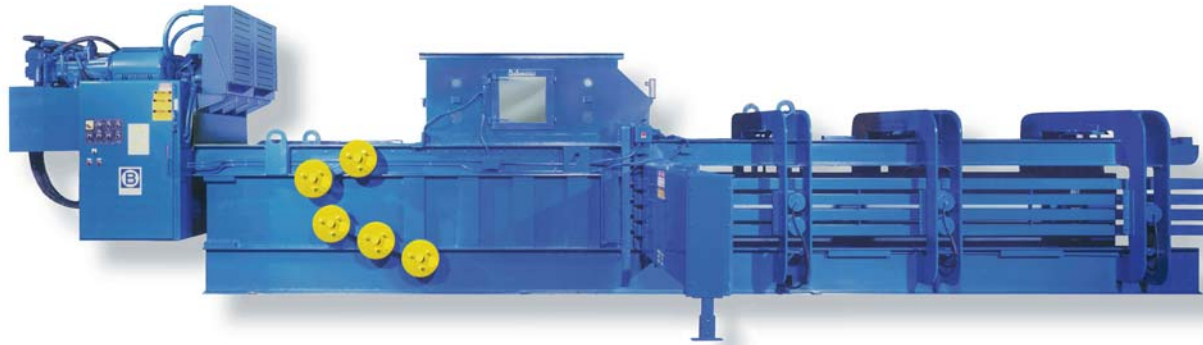


helping companies **worldwide** make the recycling process **more profitable**



# Balemaster® Balers

*we offer the industry's largest selection of quality balers*



Large Recycler Model - 25 tons per hour



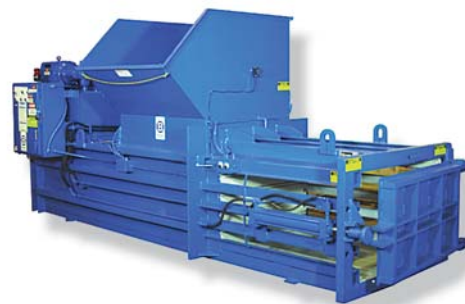
Corrugated / Folding Carton Plant Baler - 1500 lb. bales



Large Printer Model - 15 tons per hour



Distribution Center Model



Manufacturing / Assembly Plant Model

## *A Baler to Meet Your Exact Needs*

### **Industry's Broadest Line of Balers - 100+ Models**

Whether your requirements call for a single 1000 lb. bale/day or 20 bales/hour we have the baler to meet your exact needs.

### **Balers for a Wide Variety of Applications**

Our Baler Models incorporate an ideal combination of Accessories to meet your requirements. Recommended models vary depending upon feed method.

### **The Industry's Most Efficient and Reliable Auto-Tier**

Unique design requires the fewest number of component parts. The Auto-Ty is easy to maintain and service. Reliability is achieved through simplicity.

### **Energy Savings and Efficiencies**

Our hydraulics provide maximum efficiencies, using regenerative circuits and dual power packs to minimize horsepower usage and save energy.

## *What Makes Our Balers the Best*

Balemaster distinguishes itself as a leading innovator of baling technology having designed and installed balers for a wide range of applications worldwide. Our product line addresses the requirements of our customers, offering superior design, feature-rich touch screen diagnostics and controls, industry leading energy efficiencies, easy maintenance, increased reliability and longer service life...and backed up by flexible service programs. Simply put, our balers are built to be the best.

**baler applications include:**

Paper • Corrugated • Folding Carton • Chipboard • Newsprint • Wax or Poly Coated Stock • Non-Wovens • Pulp • Aluminum and Steel Cans • P.E.T. and H.D.P.E. Bottles • Foils • Textiles

# Balemaster® Shredders & Hoggers

*dependable performance in the most demanding of applications*



1400 Series "Quiet" Shredder - 25 to 40 HP  
63, 76, 90, 103 and 117" Feed Widths

The 1400 Series Low RPM  
**Quiet Shredder** *an industry favorite*

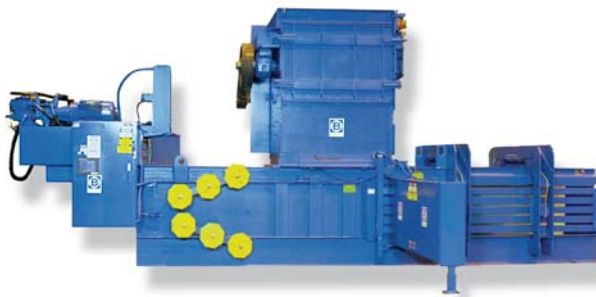
Our quiet shredder offers high capacity - up to 10,000 lbs. per hour of corrugated / folding carton sheet waste and cores. Solid steel shafts and blades lessen maintenance costs and downtime. Low RPM arbor rotation makes less noise during operation and provides a low dust working environment.



1200 Series Hogger - 50 to 100 HP  
62, 77, 92 and 107" Feed Widths



1000 PT Series "Piggy-Back" Shredder  
36 and 42" Widths, 30 to 100 HP



High Volume - Heavy Duty Shredder, Mounted on Baler  
48 x 70" Feed Opening, 100 to 300 HP



1500 Series Floor Sweep Shredder  
38 and 54" Widths, up to 30 HP

## *Built to Uncompromising Standards*

### **Heavy-Duty Construction Built for Dependability**

Every part of our shredders are expertly designed and constructed for heavy-duty operations and offer the longest service life in the industry.

### **Advanced Blade and Arbor Design**

Our advanced blade and arbor design can be matched to your requirements, achieving the best shredded piece size for maximum capacity and bale density.

### **Easily Integrated into Your System**

Designed for easy servicing and integration into a fully automatic waste handling system. Custom configurations are available to satisfy space constraints.

### **Low Noise Models**

We've perfected noise control with a host of engineered noise suppression techniques, featured in some of our models, including the 1400 Series.

## *Meeting your High Performance Needs*

Balemaster Shredders are the preferred high performance choice for a variety of wastes, including; corrugated, folding carton, paper, magazine, book, slabs, butt rolls and cores, etc. Models are engineered for heavy duty service with quality welded steel construction. Many advanced features are provided to maximize throughput capacity. User friendly Touch-Screen controls are included with most models.

**Engineering Vision** is the primary ingredient of every **Balemaster** product

# Balemaster® Additional Products

*other Balemaster products to further automate waste handling*



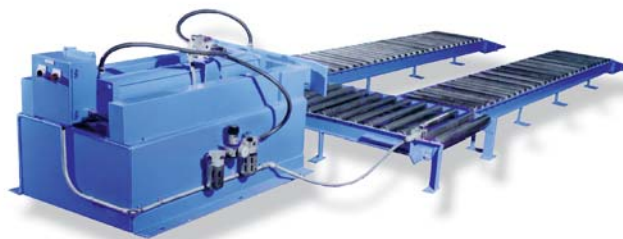
Metering Conveyor for Many "Dump and Run" Feed Applications  
36, 42, and 60" Widths



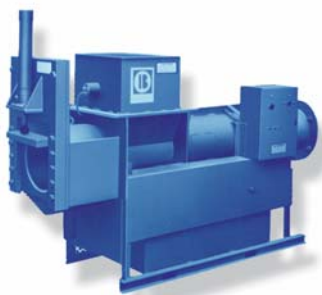
Automatic Plastic Bottle Perforator



Fluffer for Paper Conditioning



Bale Transfer and Storage System



Automatic Can Compactor



Auto-Ty Bale Tie Wire - 50 or 100 lb boxes

Over the years, Balemaster has developed many unique products to further enhance the shredding and baling function. Our ongoing research and development activities mean that you can depend on us to lead the way with new and innovative ways

## **Metering Conveyor Automatic Scrap Handler**

Our patented "Metering" conveyor eliminates time-consuming hand loading. Waste is fed at a uniform rate to either the baler or shredder.

## **Fully Automatic Fluffer**

Mounted on top of the baler's feed chute, the fluffer helps prepare paper waste for baling by "fluffing" and distributing it evenly in the charging chamber.

## **Automatic Can Compactor**

Offers a simple way to crush and compact steel and aluminum cans, even 'rejects' filled with fluid. Produces a circular 17" diameter bale for easy handling.

to make automated waste handling even more profitable for you. Contact Balemaster about the full line of value added products available for your baling and shredding needs.

## **Plastic Bottle Perforator (PET/HDPE)**

This unique machine perforates plastic bottles, allowing air to escape. As a result, the output capacity of the Baler is increased by up to 50%.

## **Transfer and Storage Systems**

Used to accumulate and store finished bales. Used in conjunction with scheduled forklift operations. An asset in facilitating "un-manned" operations.

## **Baler Auto-TY Bale Tie Wire**

This exclusive program is provided by the Balemaster Service Department. Wire is offered in skid quantities, with various gages depending upon application. A special maintenance program is offered to customers as well.

# Balemaster® The **Solutions** Provider

*helping companies worldwide automate waste handling*



**Paper Mills**



**Paper Converters**



**Folding Carton Mfg.**



**Confidential Shredding**



**Recyclers / Haulers**



**Corrugated Box Mfg.**



**Warehouse / Distribution**



**Printers / Binders**



**State of the Art 100,000 Sq. Ft. Facility**

**Balemaster Products  
are Installed  
in More Than  
55 Countries  
Serving a Host of  
Key Markets**



Balemaster is proud to be a world market leader in the industrial baler industry. Our constant emphasis on engineering excellence, quality manufacturing and assembly and most importantly innovation assures our customers that they are selecting the best. Ask a Balemaster representative today how we can make the difference in successfully implementing automatic waste handling solutions into your operations.

visit us on the web @: **[www.balemaster.com](http://www.balemaster.com)**

## **Balemaster USA**

980 Crown Court  
Crown Point, IN 46307  
Voice: (219) 663-4525  
Fax: (219) 663-4591  
E-mail: [sales@balemaster.com](mailto:sales@balemaster.com)  
Website: [www.balemaster.com](http://www.balemaster.com)

## **Balemaster Europe b.v.**

Industrieterrein De Horsel  
Industriestraat 11  
6361 HD Nuth, The Netherlands  
Voice: +31 45 524 43 43  
Fax: +31 45 524 56 60  
E-mail: [sales@balemaster.nl](mailto:sales@balemaster.nl)  
Website: [www.balemaster.nl](http://www.balemaster.nl)